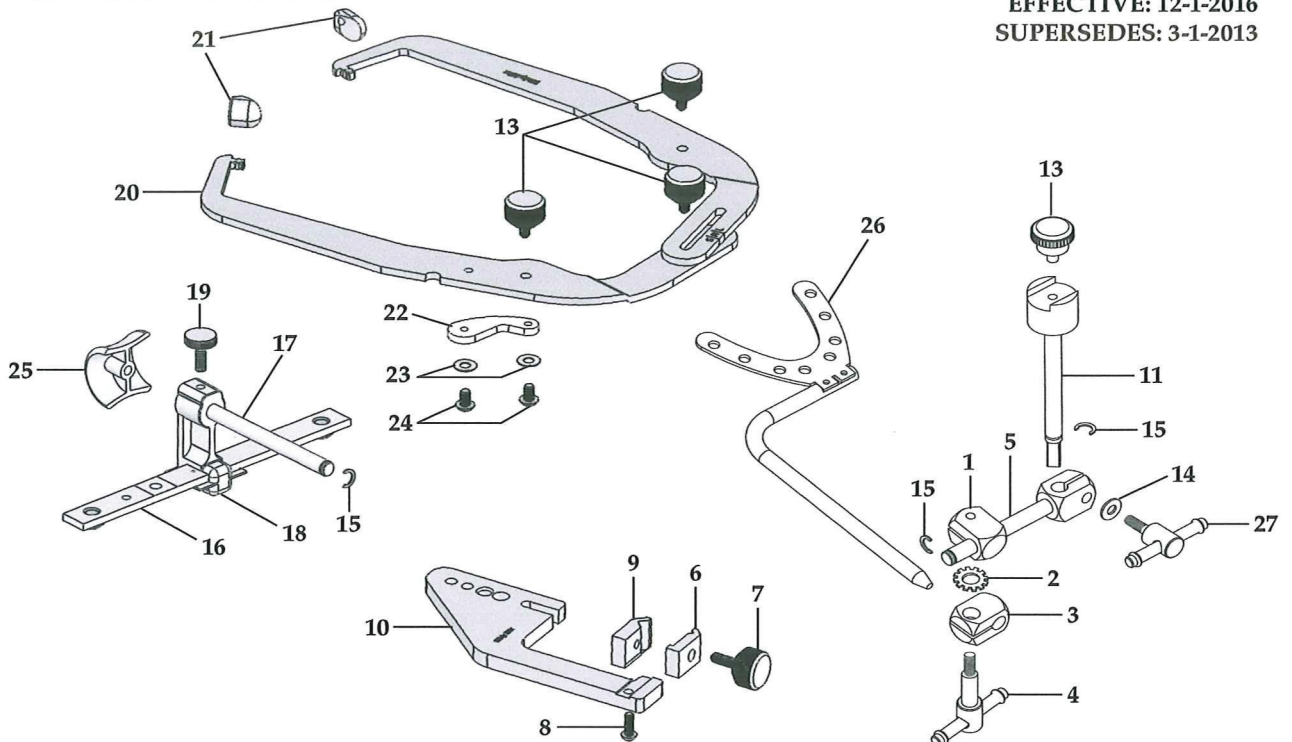


WHIP MIX® PARTS LIST

MODEL 9185 FACEBOW

34126

PART #: MPL9185
EFFECTIVE: 12-1-2016
SUPERSEDES: 3-1-2013



Key #	Item #	Description
1, 2, 3, 4	15954	Shaft Assembly
1	15997	Toggle Clamp
2	04561	Lock Washer
3	16004	Half Toggle, Facebow Fork
4	15989	T-Screw for Toggle
5, 14, 15, 27	15946	Horizontal Side Bar Assembly
5, 15	16179	Horizontal Side Bar w/Retaining Ring
5		Horizontal Side Bar*
6, 7, 8, 9, 10	34444	Transfer Base Assembly
6	34568	Clamp
7	34576	Clamp Screw
8		Screw, RD Head*
9		Fixed Clamp*
10		Transfer Base*
11, 15	34509	Vertical Rod w/Retaining Ring
11		Vertical Rod*
13	04391	Facebow Knob (4)
14		Washer*

Key #	Item #	Description
15	16489	Retaining Ring (3)
16	06890	Cross Bar
15, 17, 25	04421	Nose Piece Shaft Assembly
17		Nose Piece Shaft *
18	04413	Upright Post
19	04407	Screw for Upright Post
20		Earbow Half/Left & Right*
21	04383	Plastic Ear Piece (2) Left & Right
22		Elastic*
23	34360	Washer, Nylon (4)
24		Screw (2)*
25		Nose Piece*
26	04466	Bitefork
14, 27	16012	T-Screw for Horiz. Side Bar with washer
27		T-Screw for Horiz. Side Bar*
1, 2, 3, 4, 5, 11, 13, 14, 15, 26, 27	34380	Transfer Assembly

* Factory Repair Required



RESTORATIVE ORAL HEALTH

Whip Mix Corporation Toll-Free: 800-626-5651
361 Farmington Avenue Fax: 502-634-4512
Louisville, KY USA 40209 www.whipmix.com