

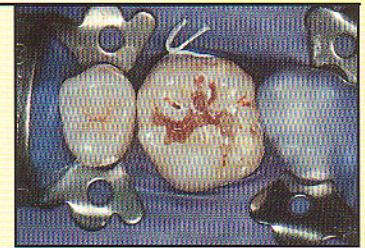
Caries Detecting Dye For Conservative Cavity Preps!

Dark blue color

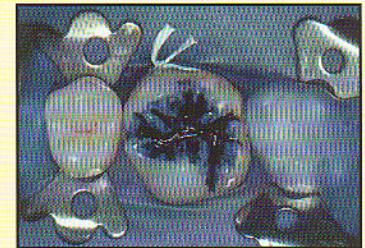
- Provides strong contrast with dentin and the pulp

Propylene glycol based caries detector

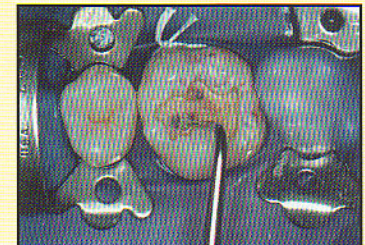
- Accurately identifies outer infected dentin in ten seconds



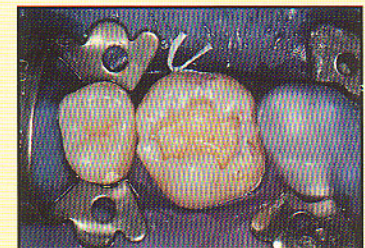
Obvious occlusal caries.



After removing obvious caries, apply SNOOP for 10 seconds.



Rinse and remove only the stained infected dentin.



Re-apply SNOOP and rinse. No further staining means no remaining infected dentin.

Carious dentin is made up of two distinct layers

- The layer of outer infected dentin is soft, discolored, non-vital, nonsensitive, cannot remineralize, **should** be removed and **is stained** by SNOOP in 10 seconds.
- The layer of inner uninfected (affected) dentin is not infused with bacterial, is capable of remineralizing, **should not** be removed, and **is not stained** by SNOOP in 10 seconds.

RATIONALE: A ten second application of SNOOP bonds to the denatured collagen which is present in the outer infected dentin but which is not present in the inner affected dentin and normal dentin.

SNOOP distinguishes between outer infected and inner affected dentin. Only the outer infected dentin is removed.

SNOOP 12 mL bottle

PULPDENT Corporation

CE
0301

80 Oakland Street • Watertown, MA 02471-0780 • U.S.A. • (617) 926-6666 or (800) 343-4342 • Fax (617) 926-6262
Visit Pulpdent Online at <http://www.pulpdent.com> • Email: pulpdent@pulpdent.com

PULPDENT®